



Wholetime Duty System

Firefighter Recruitment Campaign 2024

**Northamptonshire Fire and Rescue
Service**

Information Pack

Contents

Job Description	Page 4
Person Specification	Page 4
Rates of Pay	Page 5
The Application Process	Pages 6 - 13
Stage 1 - Sift	
Stage 2 – Online Tests	
Stage 3 – Multi - stage fitness test	
Stage 4 – Assessment Day	
Stage 5 - Interviews	
Stage 6 – Medical Appointment	Page 13

Equal Opportunities

Northants Fire and Rescue are committed to the development and promotion of Equal Opportunities and Fairness at Work.

For more information visit:

Northamptonshire Fire and Rescue Service

www.northantsfire.gov.uk

All of the information required to apply to become a Firefighter is contained within this Information Pack. If you have any queries in relation to an Application for Northamptonshire Fire and Rescue Service, please contact us via email:

firehrrecruitment@northants.police.uk

Northamptonshire Fire and Rescue Service has a Joint HR department with Northamptonshire Police, you will receive communications from @Northants.Police.uk email address throughout this process.

Northamptonshire Fire and Rescue Service is pleased to invite applications for Wholetime Firefighters to join us in this challenging and highly rewarding career.

The communities in Northamptonshire value the services that we offer and need to feel confident in the highly skilled teams that we have reducing risk as well as dealing with emergency situations. We are continually evolving and improving how we operate whilst maintaining the highest standards. Appointing the right people is essential in helping us to achieve our ambitions for the future.

If you feel that you have what it takes, we invite you to join our 2024 recruitment process.

We also encourage applications from transferees and NFRS On-Call firefighters.

The earliest possible start date will be February 2025.

Northamptonshire Fire and Rescue Service Stations

Wholetime Stations	Variable Crewing Stations	On-Call Stations
Corby	Daventry	Brackley
Kettering	Rushden	Brixworth
Mereway		Burton Latimer
Moulton		Desborough
The Mounts		Earls Barton
Wellingborough	On Call Stations	Guilsborough
	Thrapston	Irthlingborough
	Towcester	Long Buckby
	Woodford Halse	Oundle
		Raunds
		Rothwell

This document has been written to provide you with details of each stage of the recruitment process involved with the role of Wholetime Firefighter. It is important that you are aware of how you will be assessed and what you can expect at each stage. All details that you need to apply are provided in this document.

If you have any queries prior to entering the campaign, you are invited to email:

firehrrecruitment@northants.police.uk

Job Description

Role

Firefighter

Location

As directed by the Chief Fire Officer

Principal Aim

To protect and save people and property from fire and other hazards in the most competent and effective manner to the highest possible standard of care and quality.

DUTIES AND RESPONSIBILITIES**Emergencies**

- Respond immediately and safely to all emergency calls and requests for assistance.
- Deal with emergencies as directed and work effectively and efficiently as a member of a disciplined team.
- Minimise distress and suffering, including giving first aid care.

Dealing with People

- Establish and maintain the confidence of members of the public.
- Maintain links within the community.
- Be sensitive to the needs of others with regard to fairness and dignity issues.

Community Safety

- Give safety and wellbeing advice and guidance to people when requested.
- Work to help educate members of the community in the risks and hazards of fire and other emergencies.
- Assist in Service initiatives, programmes and strategies to reduce emergency calls.

Health and Safety

- Recognise health and safety issues at work and deal with them to minimise or eliminate the degree of hazard or risk.
- Ensure personal safety and that of others at all times.

Personal Fitness and Hygiene

- Maintain level of physical and medical fitness necessary to carry out the duties of a Firefighter.
- Maintain personal appearance, hygiene and cleanliness of uniform in keeping with a disciplined service.

Equipment

- Maintain all firefighting and emergency equipment in a state of readiness, including cleaning, repairing and testing as required to approved standards and procedures.

Local Geography

- Know the local streets, roads and buildings situated within the Fire Station response area.
- Be aware of the risks, possible hazards and water supplies to be found within the Fire Station area.

Administration

- Complete basic paperwork and routine administration, including recording of information.
- Use information technology as required and in accordance with the Data Protection Act 1998.
- Keep personal records up to date.

Training

- Take part in a continuous training programme by attending lectures, exercises, practice drill sessions and other forms of training to maintain competence levels.
- Attend training courses as directed.

Fire Authority

- Undertake any other duties commensurate with the level of responsibility and expertise as may be required by the Chief Fire Officer.
- Adhere to the policies and procedures of the Service.

Our Commitment to you...

We are fully committed to meeting our duties to matters of equality as set out in current legislation. These requirements and standards have been set to ensure that individuals are safe at work, for their own protection and that of others.

If you have a disability and feel that you can meet the essential requirements of an operational firefighter, but the assessment process prevents you from fully demonstrating your abilities, reasonable adjustments to the process will be considered. You will be required to provide evidence to support any adjustment request.

Rates of pay

Rates of Pay for Operational WDS Firefighters.

Firefighter	Basic Annual	Basic Hourly Rate	Overtime rate
Trainee	28,265	12.91	19.37
Development	29,442	13.44	20.16
Competent	37,675	17.20	25.80

Hours of Work

Northamptonshire Fire and Rescue Service operates a variety of duty systems, each involve the requirement to work evening hours, weekends, and public holidays.

Online Registration opens – 15th July 2024

Online Registration closes – 09th August 2024

Access to the Online Registration System (Element 1) is given by clicking on the link that will appear on [Full Time Firefighters – recruiting now! – Northamptonshire Fire and Rescue Service \(northantsfire.gov.uk\)](https://www.northantsfire.gov.uk)

Please note that CVs or any other form of application will not be required or accepted.

The Recruitment Process

The following notes are designed to give you an indication of the recruitment process, what to expect and what will be required of you:

- Online registration and Application
- Online testing – Behavioural and Situational Judgement tests
- Multi-stage fitness tests (Bleep test) at an agreed fire station
- An Assessment Day at an agreed fire station or premises
- Final Interview
- Medical/fitness

Stage 1 – Application

The start of the recruitment process involves completing an Online Assessment. This assessment is divided into three elements.

The *first element* requires you to give some personal details and register with us. You will then be presented with details of the Firefighting role and asked to consider how the role meets your expectations in terms of working environment and future career. You will also be asked some basic questions to ensure that you are eligible to apply. As part of your eligibility assessment, we will identify:

- Whether you are over the age of 18 years
- Whether you have the right to work in the UK
- Whether you have any unspent criminal convictions
- Whether you have any court judgements outstanding against you

At the end of this element, you will be advised as to whether you are eligible to continue with your application or not.

Please note that due to a system error, one of the eligibility questions to become a Firefighter will ask you if you live in the county of Northamptonshire. If you live outside Northamptonshire, please tick yes otherwise you won't be allowed to progress through to the next stage.

The timeframes for the Online registration can be seen below:

	What is involved?	How long will it take?	When will I need to do it?
Element 1 Online Registration	Registration Realistic Job Preview Eligibility Check	You should allow approximately 30 minutes to complete all three parts.	Midday 15 th July 2024- Midday 9 th August 2024

It is important to note that you can complete this or any of the online stages at any time during the timescales highlighted (i.e., day or night). You will need to have your National Insurance number available to be able to register as well as your email address. The system will communicate with you using the email address that you provide during the registration. If you provide an incorrect email address, the system will be unable to provide you with relevant information regarding your application. If you do not complete the Online

Registration, you will not be able to access the subsequent elements and progress within the campaign. **You will only be able to register with us once during this recruitment campaign so please ensure the details you give are correct as you will be unable to amend them after they have been submitted.**

Stage 2 – Online Assessments

If you meet the requirements at Stage 1, you will be invited to complete the Ability Tests. These will open at **midday on 19th August 2024 and close at mid-day on 06th September 2024**

This stage involves completing a series of tests which are detailed below:

Behavioral Styles Questionnaire

This test explores your preferred behaviors in a working environment. No revision or additional study is required for this element.

Situational Judgement Test

This test measures your judgement and decision-making skills in situations that are typical in the Fire and Rescue Service. No knowledge or experience as a Firefighter is required to complete this test and no prior revision is needed.

Stage 3 – Multi-stage Fitness Test (Bleep)

If successful following the online assessment stages as detailed above, you will be invited to attend a fitness week commencing **16th September 2024**.

The bleep test is designed to assess your level of physical fitness in line with requirements of the role.

The test is conducted over 20m and requires you to run back and forth along a 20-meter track in time to a series of beeps. The beeps during the course of the test get progressively faster as the levels increase. You are required to reach the other side of the track before the next beep. The expected standard required for the role of a firefighter is Level 8 shuttle 8

This test can be found on YouTube, Spotify and the App store

Details of the physical fitness and healthy weight requirements, along with the physical and practical tests are given below.

Physical Fitness

Firefighting can be a physically demanding and hazardous activity with potential for exposure to high physiological and environmental thermal loads. To ensure effective and safe operational performance an appropriate level of physical fitness is essential.

Your level of physical fitness will be determined by measuring your performance during a number of physical and practical firefighting tasks. In addition, you will be required to perform an 'aerobic' fitness test to predict your aerobic capacity (in $\text{mlsO}_2/\text{kg}/\text{min}$). This allows us to assess your ability to perform exercise for longer periods which is important for safe firefighting. The minimum requirement for candidates to pass at recruitment is $42.3 \text{ mls}/\text{O}_2/\text{kg}/\text{min}$ (equivalent to level 8 shuttle 8 on a bleep test). If you progress to medical you will undertake a fitness test, which will include the Chester Step Test.

Stage 4 - Assessment Day

The Assessment Centre will consist of the following:

- Group exercise
- Written exercise
- National Firefighter Selection practical tests which include:
 1. Equipment carry
 2. Confined space exercise
 3. Casualty evacuation exercise
 4. Ladder climb
 5. Ladder lift (simulated)
 6. Equipment assembly

The components of the Physical and Practical Assessment are:

Enclosed Space Test



You will need to combine confidence, agility and flexibility while negotiating a crawlway to pass the test successfully. There is only one way through the crawlway, forward, right, left, up or down and there are no doors to open. You will start the test wearing a face mask which allows clear vision. However, on completion of the test, your mask will be obscured, and you will be required to return along the same route. You should be able to complete these tests without jeopardising your safety and well-being within a specified timeframe.

Equipment Assembly Test

This test is designed to assess manual dexterity. You will need to assemble and then disassemble a piece of equipment. Before you commence the test, an instructor will demonstrate the correct assembly of the equipment. You will also have a diagram illustrating correct assembly. This test is to be completed within a specified timeframe.



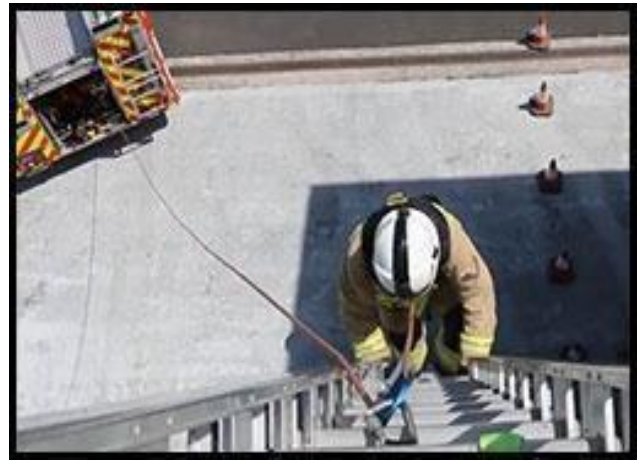
Equipment Carry Test

You will be required to carry standard firefighting equipment over a set 25 metre course for a total distance of 550 metres. You will need to combine aerobic endurance, upper and lower body strength and muscular endurance. This test is to be completed within a specified timeframe.



Ladder Climb

You will be shown how to climb the ladder and how to apply a 'leg lock'. You will then be allowed to practice the leg lock. You will climb the ladder to the specified height. At that point, you will use the leg lock to secure yourself to the ladder, remove your hands from the ladder and lean back, looking over your shoulder to identify an object which is being held by the instructor at ground level. When you have identified the object, you will be told to put your hands back on the ladder and release the leg lock. You will then be instructed to descend the ladder. You will need to show confidence and apply the correct technique to climb the ladder.

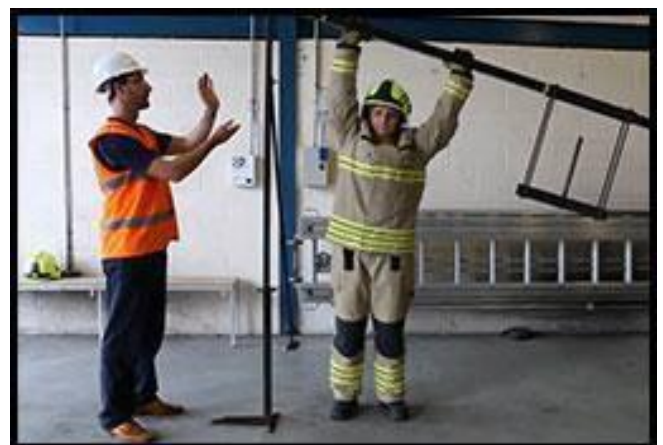


Casualty Evacuation Test

You will be required to drag a 55kg mannequin/dummy simulating a casualty evacuation for a distance of 30 metres. This test is to be completed within a specified timeframe.

Ladder Lift Simulator Test

You will need to combine upper and lower body strength and co-ordination to lift a ladder over your head to the required height and lower it safely and under control. The approximate weight of the ladder is 26-30kg.





Ladder Extension Fitness Test

You will carry out a test that simulates extending a standard 13.5 metre Fire and Rescue Service ladder from the first to the second floor of a building. This will be performed by pulling down on a rope. To complete this test successfully, you will need to combine upper body strength, grip strength and co-ordination. This test is to be completed within a specified timeframe.

Stage 6 - Final Interviews

These will take place week commencing week commencing **7th October 2024** and will comprise of a panel interview and will include a briefing exercise which will be prepared prior to attending

Stage 6 – Medical/Fitness

Firefighters may be exposed to extreme physical and psychological demands in hostile and dangerous environments. In order to comply with relevant statutory provisions, the medical screening for Firefighters is rigorous. Under the Health and Safety at Work Act 1974, the Fire and Rescue Service must reduce risk so far as is reasonably practicable. This means a medical condition giving rise to reasonably foreseeable occupational risk would not be acceptable.

Medical suitability is determined by an individual assessment. For practical reasons, this cannot be undertaken until the later stages of the recruitment process. The nature and effect of medical conditions may vary. It is therefore not possible to confirm medical conditions that would be unacceptable prior to an individual medical assessment. However, if you have a medical condition or a history of a medical condition which might present problems, the following general guidance should help you consider your medical suitability before applying.

A medical condition or functional limitation which, despite any reasonable adjustments, gives rise to significantly increased occupational risk of the following is unacceptable:

- Sudden collapse or sudden incapacitation
- Impaired judgement
- Altered awareness
- Substantial physical or psychological injury/ill health
- Any other effect which would pose a substantial health and safety risk to yourself and others.

The individual assessment will involve due consideration of any opinions or medical reports you may wish to submit. However, the decision on the significance of any risks identified will rest with the Fire and Rescue Service.

A fitness assessment will be carried out to determine aerobic fitness. The minimum requirement for candidates to pass at recruitment is 42.3 mls/O₂/kg/min

Please note that the medical involves both drug and alcohol tests.

Appointment

The earliest possible start date will be February 2025.

If you are successful at all stages of the recruitment process, you will be contacted by Northamptonshire Fire & Rescue Service regarding an offer of employment. Offers of employment will be made on the number of current vacancies and future vacancies as they arise. Any offer of employment is subject to the receipt of satisfactory references and vetting checks. Should an unsatisfactory reference or vetting check be received, the offer of employment will be withdrawn.

It is anticipated that NFRS reserve list will remain current for 12 months from completion of the selection process. If you have not secured a position within the timescales set by NFRS, you will be required to apply through a subsequent recruitment process.

Successful candidates will be expected to attend an 8 week (Mon-Fri) residential initial training course at the fire service college in Gloucestershire.

We would like to take the opportunity to wish you every success throughout the Recruitment Process.

If you have any queries, you are invited to email:

Firehrrecruitment@northants.police.uk